

OFFICIAL BALLOT

HJD
Judge

HW
Judge

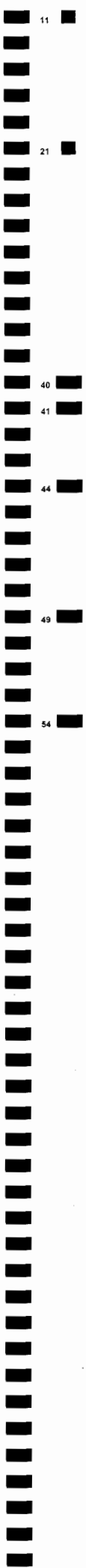
A HENNEPIN COUNTY

B STATE OF MINNESOTA

C NOVEMBER 4, 2008

STATE GENERAL ELECTION BALLOT

INSTRUCTIONS TO VOTERS
To vote, completely fill in the oval(s) next to your choice(s) like this: ●



FEDERAL OFFICES

PRESIDENT AND VICE-PRESIDENT
VOTE FOR ONE TEAM

JOHN MCCAIN AND SARAH PALIN
Republican

BARACK OBAMA AND JOE BIDEN
Democratic-Farmer-Labor

CYNTHIA MCKINNEY AND ROSA CLEMENTE
Green

ROGER CALERO AND ALYSON KENNEDY
Socialist Workers

RALPH NADER AND MATT GONZALEZ
Independent

BOB BARR AND WAYNE A. ROOT
Libertarian

CHUCK BALDWIN AND DARRELL CASTLE
Constitution

write-in, if any

U.S. SENATOR
VOTE FOR ONE

DEAN BARKLEY
Independence

NORM COLEMAN
Republican

AL FRANKEN
Democratic-Farmer-Labor

CHARLES ALDRICH
Libertarian

JAMES NIEMACKL
Constitution

write-in, if any

U.S. REPRESENTATIVE
DISTRICT 3
VOTE FOR ONE

DAVID DILLON
Independence

ERIK PAULSEN
Republican

ASHWIN MADIA
Democratic-Farmer-Labor

write-in, if any

STATE OFFICES

STATE REPRESENTATIVE
DISTRICT 47A
VOTE FOR ONE

TROY BUCHHOLZ
Republican

DENISE R. DITTRICH
Democratic-Farmer-Labor

write-in, if any

CONSTITUTIONAL AMENDMENT

Failure to vote on a constitutional amendment, will have the same effect as voting no for the amendment.

To vote for a proposed constitutional amendment, completely fill in the oval next to the word "YES" for that question. To vote against a proposed constitutional amendment, completely fill in the oval next to the word "NO" for that question.

YES

NO

COUNTY OFFICES

COUNTY COMMISSIONER
DISTRICT 7
VOTE FOR ONE

JOAN MOLENAAR

JEFF JOHNSON

write-in, if any

THREE RIVERS PARK
COMMISSIONER DISTRICT 2
VOTE FOR ONE

JANICE MEYER

MARILYNN CORCORAN

write-in, if any *Paul Lubbers*

SOIL AND WATER CONSERVATION
DISTRICT SUPERVISOR
DISTRICT 1
VOTE FOR ONE

KIM N. BOYCE

write-in, if any *Paul Lubbers*

SOIL AND WATER CONSERVATION
DISTRICT SUPERVISOR
DISTRICT 3
VOTE FOR ONE

RICHARD A. KLATTE

RAHN V WORKCUFF

BEN TORELL

JAMES WISKER

write-in, if any *Paul Lubbers*

SOIL AND WATER CONSERVATION
DISTRICT SUPERVISOR
DISTRICT 5
VOTE FOR ONE

KARL HANSON

JEFFREY A. BECK

write-in, if any *Paul Lubbers*

CITY OFFICES

MAYOR
CITY OF CHAMPLIN
VOTE FOR ONE

MARK UGLEM

write-in, if any *Paul Lubbers*

0450 CITY OF CHAMPLIN W 1 P 1

STATE GENERAL ELECTION BALLOT

HENNEPIN COUNTY

STATE OF MINNESOTA

U.S. Senator
 Precinct: *Wichamplin*
 Challenged ballot # *6*
 Challenged by FRANKEN
 Challenge reason:
not Coleman's identifying mark

INSTRUCTIONS TO VOTE!
 To vote, completely fill in the oval(s) next to your choice

JUDICIAL OFFICES	4TH DISTRICT COURT	4TH DISTRICT COURT
SUPREME COURT	JUDGE 14 VOTE FOR ONE	JUDGE 56 VOTE FOR ONE
ASSOCIATE JUSTICE 3 VOTE FOR ONE	GEORGE F. MCGUNNIGLE <small>Incumbent</small>	HERBERT P. LEFLER <small>Incumbent</small>
<input checked="" type="radio"/> TIM TINGELSTAD <small>write-in, if any</small>	<input checked="" type="radio"/> <i>Paul Lubbers</i>	<input checked="" type="radio"/> <i>Paul Lubbers</i>
PAUL H. ANDERSON <small>Incumbent</small>	JUDGE 15 VOTE FOR ONE	JUDGE 57 VOTE FOR ONE
<small>write-in, if any</small>	TONY N. LEUNG <small>Incumbent</small>	JEANNICE M. REDING <small>Incumbent</small>
ASSOCIATE JUSTICE 4 VOTE FOR ONE	<input checked="" type="radio"/> <i>Paul Lubbers</i>	<input checked="" type="radio"/> <i>Paul Lubbers</i>
<input checked="" type="radio"/> DEBORAH HEDLUND <small>write-in, if any</small>	JUDGE 19 VOTE FOR ONE	JUDGE 59 VOTE FOR ONE
LORIE SKJERVEN GILDEA <small>Incumbent</small>	GINA M BRANDT <small>Incumbent</small>	WARREN R. SAGSTUEN <small>Incumbent</small>
<small>write-in, if any</small>	<input checked="" type="radio"/> <i>Paul Lubbers</i>	<input checked="" type="radio"/> <i>Paul Lubbers</i>
COURT OF APPEALS	JUDGE 20 VOTE FOR ONE	JUDGE 60 VOTE FOR ONE
JUDGE 16 VOTE FOR ONE	DANIEL C. MORENO <small>Incumbent</small>	LLOYD ZIMMERMAN <small>Incumbent</small>
TERRI J. STONEBURNER <small>Incumbent</small>	<input checked="" type="radio"/> <i>Paul Lubbers</i>	<input checked="" type="radio"/> <i>Paul Lubbers</i>
<input checked="" type="radio"/> DAN GRIFFITH <small>write-in, if any</small>	JUDGE 25 VOTE FOR ONE	JUDGE 61 VOTE FOR ONE
JUDGE 1 VOTE FOR ONE	ROBERT A. BLAESER <small>Incumbent</small>	ROBERT M. SMALL <small>Incumbent</small>
<input checked="" type="radio"/> EDWARD TOUSSAINT, JR. <small>Incumbent</small>	<input checked="" type="radio"/> <i>Paul Lubbers</i>	<input checked="" type="radio"/> <i>Paul Lubbers</i>
<small>write-in, if any</small>	JUDGE 27 VOTE FOR ONE	JUDGE 62 VOTE FOR ONE
JUDGE 8 VOTE FOR ONE	JAY M. QUAM <small>Incumbent</small>	RONALD L. ABRAMS <small>Incumbent</small>
<input checked="" type="radio"/> THOMAS J. KALITOWSKI <small>Incumbent</small>	<input checked="" type="radio"/> <i>Paul Lubbers</i>	<input checked="" type="radio"/> <i>Paul Lubbers</i>
<small>write-in, if any</small>	JUDGE 28 VOTE FOR ONE	
JUDGE 9 VOTE FOR ONE	TODDRICK S. BARNETTE <small>Incumbent</small>	
<input checked="" type="radio"/> ROGER M. KLAPHAKE <small>Incumbent</small>	<input checked="" type="radio"/> <i>Paul Lubbers</i>	
<small>write-in, if any</small>	JUDGE 30 VOTE FOR ONE	
JUDGE 10 VOTE FOR ONE	SUSAN M. ROBINER <small>Incumbent</small>	
<input checked="" type="radio"/> HARRIET LANSING <small>Incumbent</small>	<input checked="" type="radio"/> <i>Paul Lubbers</i>	
<small>write-in, if any</small>	JUDGE 31 VOTE FOR ONE	
JUDGE 15 VOTE FOR ONE	MARGARET ANNE DALY <small>Incumbent</small>	
<input checked="" type="radio"/> KEVIN G. ROSS <small>Incumbent</small>	<input checked="" type="radio"/> <i>Paul Lubbers</i>	
<small>write-in, if any</small>	JUDGE 32 VOTE FOR ONE	
4TH DISTRICT COURT	<input checked="" type="radio"/> <i>Paul Lubbers</i>	
JUDGE 9 VOTE FOR ONE	JACK NORDBY <small>Incumbent</small>	
<input checked="" type="radio"/> PHILIP D. BUSH <small>Incumbent</small>	<input checked="" type="radio"/> <i>Paul Lubbers</i>	
<input checked="" type="radio"/> EUGENE LINK <small>write-in, if any</small>	JUDGE 36 VOTE FOR ONE	
<small>write-in, if any</small>	JOHN L. HOLAHAN <small>Incumbent</small>	
JUDGE 53 VOTE FOR ONE	<input checked="" type="radio"/> <i>Paul Lubbers</i>	
JANE RANUM	JUDGE 37 VOTE FOR ONE	
<input checked="" type="radio"/> DAVID L. PIPER <small>write-in, if any</small>	<input checked="" type="radio"/> <i>Paul Lubbers</i>	
JUDGE 58 VOTE FOR ONE	RICHARD S. SCHERER <small>Incumbent</small>	
<input checked="" type="radio"/> JAMES T. SWENSON <small>Incumbent</small>	<input checked="" type="radio"/> <i>Paul Lubbers</i>	
<input checked="" type="radio"/> THOMAS F. HAEG <small>write-in, if any</small>	JUDGE 38 VOTE FOR ONE	
JUDGE 1 VOTE FOR ONE	BERYL A. NORD <small>Incumbent</small>	
<input checked="" type="radio"/> BILL KOCH <small>Incumbent</small>	<input checked="" type="radio"/> <i>Paul Lubbers</i>	
<small>write-in, if any</small>	JUDGE 42 VOTE FOR ONE	
JUDGE 4 VOTE FOR ONE	CHARLES A. PORTER, JR. <small>Incumbent</small>	
<input checked="" type="radio"/> ANN LESLIE ALTON <small>Incumbent</small>	<input checked="" type="radio"/> <i>Paul Lubbers</i>	
<small>write-in, if any</small>	JUDGE 43 VOTE FOR ONE	
JUDGE 5 VOTE FOR ONE	JANET NORDELL POSTON <small>Incumbent</small>	
<input checked="" type="radio"/> KERRY MEYER <small>Incumbent</small>	<input checked="" type="radio"/> <i>Paul Lubbers</i>	
<small>write-in, if any</small>	JUDGE 46 VOTE FOR ONE	
JUDGE 10 VOTE FOR ONE	STEPHEN C. ALDRICH <small>Incumbent</small>	
<input checked="" type="radio"/> KATHRYN L. QUAINANCE <small>Incumbent</small>	<input checked="" type="radio"/> <i>Paul Lubbers</i>	
<small>write-in, if any</small>	JUDGE 47 VOTE FOR ONE	
JUDGE 11 VOTE FOR ONE	TANYA M. BRANSFORD <small>Incumbent</small>	
<input checked="" type="radio"/> MARY STEENSON DUFRESNE <small>Incumbent</small>	<input checked="" type="radio"/> <i>Paul Lubbers</i>	
<small>write-in, if any</small>	JUDGE 51 VOTE FOR ONE	
	IVY S. BERNHARDSON <small>Incumbent</small>	
	<input checked="" type="radio"/> <i>Paul Lubbers</i>	

Typ:01 Seq:0072 Spl:01

VOTE FRONT AND BACK OF BALLOT