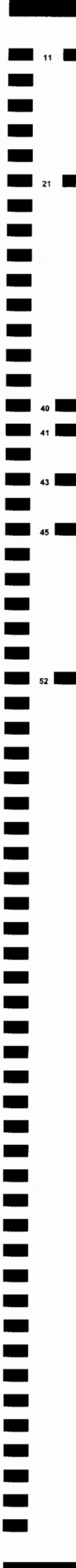


W J  
Judge

K T  
Judge

HENNEPIN COUNTY		STATE OF MINNESOTA		NOVEMBER 4, 2008	
<b>STATE GENERAL ELECTION BALLOT</b>					
<b>INSTRUCTIONS TO VOTERS</b> To vote, completely fill in the oval(s) next to your choice(s) like this: <input type="radio"/>					
<b>FEDERAL OFFICES</b>		<b>COUNTY OFFICES</b>		<b>SCHOOL DISTRICT QUESTIONS</b> <b>SPECIAL ELECTION</b> <b>INDEPENDENT SCHOOL DISTRICT NO. 281</b> <b>(ROBBINSDALE AREA SCHOOLS)</b>	
<b>PRESIDENT AND VICE-PRESIDENT</b> VOTE FOR ONE TEAM		<b>THREE RIVERS PARK COMMISSIONER DISTRICT 2</b> VOTE FOR ONE		To vote for a question, completely fill in the oval next to the word "YES" for that question. To vote against a question, completely fill in the oval next to the word "NO" for that question.	
<input type="radio"/> JOHN MCCAIN AND SARAH PALIN Republican		<input type="radio"/> JANICE MEYER			
<input type="radio"/> BARACK OBAMA AND JOE BIDEN Democratic-Farmer-Labor		<input type="radio"/> MARILYNN CORCORAN		The board of Independent School District No. 281 (Robbinsdale Area Schools) has proposed to revoke the school district's existing referendum revenue authorization of \$848.25 per pupil and to replace that authorization with a new authorization of \$1,360.35 per pupil. The proposed new referendum revenue authorization would increase each year by the rate of inflation and be applicable for seven years unless otherwise revoked or reduced as provided by law.	
<input type="radio"/> CYNTHIA MCKINNEY AND ROSA CLEMENTE Green		write-in, if any			
<input type="radio"/> RÓGER CALERO AND ALYSON KENNEDY Socialist Workers		<b>SOIL AND WATER CONSERVATION DISTRICT SUPERVISOR DISTRICT 1</b> VOTE FOR ONE		<b>SCHOOL DISTRICT BALLOT QUESTION 1</b> <b>REVOKING EXISTING REFERENDUM REVENUE AUTHORIZATION; APPROVING NEW AUTHORIZATION</b>	
<input type="radio"/> RALPH NADER AND MATT GONZALEZ Independent		<input type="radio"/> KIM N. BOYCE			
<input type="radio"/> BOB BARR AND WAYNE A. ROOT Libertarian		write-in, if any		Shall the school district's existing referendum revenue authorization be revoked and the increase in the revenue proposed by the board of Independent School District No. 281 be approved?	
<input type="radio"/> CHUCK BALDWIN AND DARRELL CASTLE Constitution		<b>SOIL AND WATER CONSERVATION DISTRICT SUPERVISOR DISTRICT 3</b> VOTE FOR ONE			
write-in, if any		<input type="radio"/> RICHARD A. KLATTE		BY VOTING "YES" ON THIS BALLOT QUESTION, YOU ARE VOTING FOR A PROPERTY TAX INCREASE.	
<b>U.S. SENATOR</b> VOTE FOR ONE		<input type="radio"/> RAHN V WORKCUFF			
<input type="radio"/> DEAN BARKLEY Independence		<input type="radio"/> BEN TORELL		YES NO	
<input checked="" type="radio"/> NORM COLEMAN Republican		<input type="radio"/> JAMES WISKER			
<input type="radio"/> AL FRANKEN Democratic-Farmer-Labor		write-in, if any		<b>SCHOOL DISTRICT BALLOT QUESTION 2</b> <b>APPROVAL OF SCHOOL DISTRICT REFERENDUM REVENUE AUTHORIZATION</b>	
<input type="radio"/> CHARLES ALDRICH Libertarian		<b>SOIL AND WATER CONSERVATION DISTRICT SUPERVISOR DISTRICT 5</b> VOTE FOR ONE			
<input type="radio"/> JAMES NIEMACKL Constitution		<input type="radio"/> KARL HANSON		The board of Independent School District No. 281 (Robbinsdale Area Schools) has also proposed to increase its general education revenue by \$119.46 per pupil. The proposed referendum revenue authorization would be applicable for seven years unless otherwise revoked or reduced as provided by law.	
write-in, if any		<input type="radio"/> JEFFREY A. BECK			
<b>U.S. REPRESENTATIVE DISTRICT 3</b> VOTE FOR ONE		write-in, if any		If School District Ballot Question 1 is approved, shall the increase in the revenue proposed by the board of Independent School District No. 281 also be approved?	
<input type="radio"/> DAVID DILLON Independence		<b>CITY OFFICES</b>			
<input type="radio"/> ERIK PAULSEN Republican		<b>COUNCIL MEMBER</b> <b>CITY OF BROOKLYN CENTER</b> VOTE FOR UP TO TWO		YES NO	
<input type="radio"/> ASHWIN MADIA Democratic-Farmer-Labor		<input type="radio"/> MARY O'CONNOR			
write-in, if any		<input type="radio"/> ED NELSON		BY VOTING "YES" ON THIS BALLOT QUESTION, YOU ARE VOTING FOR A PROPERTY TAX INCREASE.	
<b>STATE OFFICES</b>		<input type="radio"/> TIM ROCHE			
<b>STATE REPRESENTATIVE DISTRICT 46B</b> VOTE FOR ONE		<input type="radio"/> KAY LASMAN		Should the City of Brooklyn Center charter be amended to require the City Council to establish administrative penalties for violations of City ordinances?	
<input type="radio"/> TIM OLSON Republican		write-in, if any			
<input type="radio"/> DEBRA HILSTROM Democratic-Farmer-Labor		<b>CITY QUESTION</b>		YES NO	
<input type="radio"/> ALLAN HANCOCK Green		To vote for a question, completely fill in the oval next to the word "YES" for that question. To vote against a question, completely fill in the oval next to the word "NO" for that question.			
write-in, if any		<b>CITY QUESTION</b>		BY VOTING "YES" ON THIS BALLOT QUESTION, YOU ARE VOTING FOR A PROPERTY TAX INCREASE.	
<b>CONSTITUTIONAL AMENDMENT</b>		Should the City of Brooklyn Center charter be amended to require the City Council to establish administrative penalties for violations of City ordinances?			
Failure to vote on a constitutional amendment, will have the same effect as voting no for the amendment.		<input checked="" type="radio"/> YES		YES NO	
To vote for a proposed constitutional amendment, completely fill in the oval next to the word "YES" for that question. To vote against a proposed constitutional amendment, completely fill in the oval next to the word "NO" for that question.		<input type="radio"/> NO			
<b>CLEAN WATER, WILDLIFE, CULTURAL HERITAGE AND NATURAL AREAS</b>		Should the Minnesota Constitution be amended to dedicate funding to protect our drinking water sources; to protect, enhance, and restore our wetlands, prairies, forests, and fish, game, and wildlife habitat; to preserve our arts and cultural heritage; to support our parks and trails; and to protect, enhance, and restore our lakes, rivers, streams, and groundwater by increasing the sales and use tax rate beginning July 1, 2009, by three-eighths of one percent on taxable sales until the year 2034?		YES NO	
Shall the Minnesota Constitution be amended to dedicate funding to protect our drinking water sources; to protect, enhance, and restore our wetlands, prairies, forests, and fish, game, and wildlife habitat; to preserve our arts and cultural heritage; to support our parks and trails; and to protect, enhance, and restore our lakes, rivers, streams, and groundwater by increasing the sales and use tax rate beginning July 1, 2009, by three-eighths of one percent on taxable sales until the year 2034?		<input type="radio"/> YES			
<input type="radio"/> YES		<input checked="" type="radio"/> NO		0225 CITY OF BROOKLYN CENTER P 6	
<input checked="" type="radio"/> NO					



# STATE GENERAL ELECTION BALLOT

D HENNEPIN COUNTY E STATE OF MINNESOTA

U.S. Senator  
 Precinct: *6*  
 Challenged ballot #: *61*  
 Challenged by FRANKEN  
 Challenge reason:  
*Not Coleman; is voter intent unclear*

**INSTRUCTIONS TO VOTERS**  
 To vote, completely fill in the oval(s) next to your choice

JUDICIAL OFFICES	4TH DISTRICT COURT	4TH DISTRICT COURT
<b>SUPREME COURT</b>	<b>JUDGE 14 VOTE FOR ONE</b>	<b>JUDGE 56 VOTE FOR ONE</b>
<b>ASSOCIATE JUSTICE 3 VOTE FOR ONE</b>	<b>GEORGE F. MCGUNNIGLE</b> Incumbent	<input type="radio"/> <b>HERBERT P. LEFLER</b> Incumbent
<b>TIM TINGELSTAD</b>	write-in, if any	<input type="radio"/> write-in, if any
<b>PAUL H. ANDERSON</b> Incumbent	<b>JUDGE 15 VOTE FOR ONE</b>	<b>JUDGE 57 VOTE FOR ONE</b>
write-in, if any	<b>TONY N. LEUNG</b> Incumbent	<input type="radio"/> <b>JEANNICE M. REDING</b> Incumbent
<b>ASSOCIATE JUSTICE 4 VOTE FOR ONE</b>	write-in, if any	<input type="radio"/> write-in, if any
<b>DEBORAH HEDLUND</b>	<b>JUDGE 19 VOTE FOR ONE</b>	<b>JUDGE 59 VOTE FOR ONE</b>
<b>LORIE SKJERVEN GILDEA</b> Incumbent	<b>GINA M BRANDT</b> Incumbent	<input type="radio"/> <b>WARREN R. SAGSTUEN</b> Incumbent
write-in, if any	write-in, if any	<input type="radio"/> write-in, if any
<b>COURT OF APPEALS</b>	<b>JUDGE 20 VOTE FOR ONE</b>	<b>JUDGE 60 VOTE FOR ONE</b>
<b>JUDGE 16 VOTE FOR ONE</b>	<b>DANIEL C. MORENO</b> Incumbent	<input type="radio"/> <b>LLOYD ZIMMERMAN</b> Incumbent
<b>TERRI J. STONEBURNER</b> Incumbent	write-in, if any	<input type="radio"/> write-in, if any
<b>DAN GRIFFITH</b>	<b>JUDGE 25 VOTE FOR ONE</b>	<b>JUDGE 61 VOTE FOR ONE</b>
write-in, if any	<b>ROBERT A. BLAESER</b> Incumbent	<input type="radio"/> <b>ROBERT M. SMALL</b> Incumbent
<b>JUDGE 1 VOTE FOR ONE</b>	write-in, if any	<input type="radio"/> write-in, if any
<b>EDWARD TOUSSAINT, JR.</b> Incumbent	<b>JUDGE 27 VOTE FOR ONE</b>	<b>JUDGE 62 VOTE FOR ONE</b>
write-in, if any	<b>JAY M. QUAM</b> Incumbent	<input type="radio"/> <b>RONALD L. ABRAMS</b> Incumbent
<b>JUDGE 8 VOTE FOR ONE</b>	write-in, if any	<input type="radio"/> write-in, if any
<b>THOMAS J. KALITOWSKI</b> Incumbent	<b>JUDGE 28 VOTE FOR ONE</b>	
write-in, if any	<b>TODDRICK S. BARNETTE</b> Incumbent	
<b>JUDGE 9 VOTE FOR ONE</b>	write-in, if any	
<b>ROGER M. KLAPHAKE</b> Incumbent	<b>JUDGE 30 VOTE FOR ONE</b>	
write-in, if any	<b>SUSAN M. ROBINER</b> Incumbent	
<b>JUDGE 10 VOTE FOR ONE</b>	write-in, if any	
<b>HARRIET LANSING</b> Incumbent	<b>JUDGE 31 VOTE FOR ONE</b>	
write-in, if any	<b>MARGARET ANNE DALY</b> Incumbent	
<b>JUDGE 15 VOTE FOR ONE</b>	write-in, if any	
<b>KEVIN G. ROSS</b> Incumbent	<b>JUDGE 32 VOTE FOR ONE</b>	
write-in, if any	<b>PETER A. CAHILL</b> Incumbent	
<b>4TH DISTRICT COURT</b>	write-in, if any	
<b>JUDGE 9 VOTE FOR ONE</b>	<b>JUDGE 33 VOTE FOR ONE</b>	
<input type="radio"/> <b>PHILIP D. BUSH</b> Incumbent	<input type="radio"/> <b>JACK NORDBY</b> Incumbent	
<input type="radio"/> <b>EUGENE LINK</b>	write-in, if any	
write-in, if any	<b>JUDGE 36 VOTE FOR ONE</b>	
<b>JUDGE 53 VOTE FOR ONE</b>	<input type="radio"/> <b>JOHN L. HOLAHAN</b> Incumbent	
<b>JANE RANUM</b>	write-in, if any	
<b>DAVID L. PIPER</b>	<b>JUDGE 37 VOTE FOR ONE</b>	
write-in, if any	<input type="radio"/> <b>RICHARD S. SCHERER</b> Incumbent	
<b>JUDGE 58 VOTE FOR ONE</b>	write-in, if any	
<input type="radio"/> <b>JAMES T. SWENSON</b> Incumbent	<b>JUDGE 38 VOTE FOR ONE</b>	
<input type="radio"/> <b>THOMAS F. HAEG</b>	<input type="radio"/> <b>BERYL A. NORD</b> Incumbent	
write-in, if any	write-in, if any	
<b>JUDGE 1 VOTE FOR ONE</b>	<b>JUDGE 42 VOTE FOR ONE</b>	
<input type="radio"/> <b>BILL KOCH</b> Incumbent	<input type="radio"/> <b>CHARLES A. PORTER, JR.</b> Incumbent	
write-in, if any	write-in, if any	
<b>JUDGE 4 VOTE FOR ONE</b>	<b>JUDGE 43 VOTE FOR ONE</b>	
<input type="radio"/> <b>ANN LESLIE ALTON</b> Incumbent	<input type="radio"/> <b>JANET NORDELL POSTON</b> Incumbent	
write-in, if any	write-in, if any	
<b>JUDGE 5 VOTE FOR ONE</b>	<b>JUDGE 46 VOTE FOR ONE</b>	
<input type="radio"/> <b>KERRY MEYER</b> Incumbent	<input type="radio"/> <b>STEPHEN C. ALDRICH</b> Incumbent	
write-in, if any	write-in, if any	
<b>JUDGE 10 VOTE FOR ONE</b>	<b>JUDGE 47 VOTE FOR ONE</b>	
<input type="radio"/> <b>KATHRYN L. QUAINANCE</b> Incumbent	<input type="radio"/> <b>TANYA M. BRANSFORD</b> Incumbent	
write-in, if any	write-in, if any	
<b>JUDGE 11 VOTE FOR ONE</b>	<b>JUDGE 51 VOTE FOR ONE</b>	<input type="radio"/>
<input type="radio"/> <b>MARY STEENSON DUFRESNE</b> Incumbent	<input type="radio"/> <b>IVY S. BERNHARDSON</b> Incumbent	<input type="radio"/>
write-in, if any	write-in, if any	<input type="radio"/>

VOTE FRONT AND BACK OF BALLOT