

OFFICIAL BALLOT

J. J. Judge

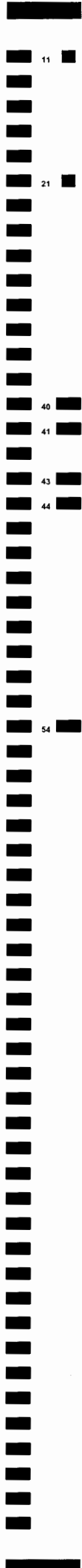
J. J. Judge

A HENNEPIN COUNTY B STATE OF MINNESOTA C NOVEMBER 4, 2008

STATE GENERAL ELECTION BALLOT

INSTRUCTIONS TO VOTERS To vote, completely fill in the oval(s) next to your choice(s) like this: ●

Grid containing sections: FEDERAL OFFICES (President and Vice-President, U.S. Senator, U.S. Representative), COUNTY OFFICES (Three Rivers Park Commissioner, Soil and Water Conservation District Supervisors), SCHOOL DISTRICT OFFICES (School Board Member, School District Ballot Questions), and CONSTITUTIONAL AMENDMENT (Clean Water, Wildlife, Cultural Heritage and Natural Areas).



# STATE GENERAL ELECTION BALLOT

D ■■■ HENNEPIN COUNTY ■■■ E ■■■ STATE OF MINNESOTA

U.S. Senator  
 Precinct: Brooklyn Center 5  
 Challenged ballot # 62  
 Challenged by FRANKEN  
 Challenge reason: Not Coleman;  
 Is Voter Intent Unclear

**INSTRUCTIONS TO VOTERS**  
 To vote, completely fill in the oval(s) next to your choice

JUDICIAL OFFICES	4TH DISTRICT COURT	4TH DISTRICT COURT
<b>SUPREME COURT</b>	<b>JUDGE 14 VOTE FOR ONE</b>	<b>JUDGE 56 VOTE FOR ONE</b>
<b>ASSOCIATE JUSTICE 3 VOTE FOR ONE</b>	<input type="radio"/> <b>GEORGE F. MCGUNNIGLE</b> Incumbent	<input type="radio"/> <b>HERBERT P. LEFLER</b> Incumbent
<input type="radio"/> <b>PAUL H. ANDERSON</b> Incumbent	<input type="radio"/> write-in, if any	<input type="radio"/> write-in, if any
<input type="radio"/> <b>TIM TINGELSTAD</b>	<b>JUDGE 15 VOTE FOR ONE</b>	<b>JUDGE 57 VOTE FOR ONE</b>
<input type="radio"/> write-in, if any	<input type="radio"/> <b>TONY N. LEUNG</b> Incumbent	<input type="radio"/> <b>JEANNICE M. REDING</b> Incumbent
<b>ASSOCIATE JUSTICE 4 VOTE FOR ONE</b>	<input type="radio"/> write-in, if any	<input type="radio"/> write-in, if any
<input type="radio"/> <b>LORIE SKJERVEN GILDEA</b> Incumbent	<b>JUDGE 19 VOTE FOR ONE</b>	<b>JUDGE 59 VOTE FOR ONE</b>
<input type="radio"/> <b>DEBORAH HEDLUND</b>	<input type="radio"/> <b>GINA M BRANDT</b> Incumbent	<input type="radio"/> <b>WARREN R. SAGSTUEN</b> Incumbent
<input type="radio"/> write-in, if any	<input type="radio"/> write-in, if any	<input type="radio"/> write-in, if any
<b>COURT OF APPEALS</b>	<b>JUDGE 20 VOTE FOR ONE</b>	<b>JUDGE 60 VOTE FOR ONE</b>
<b>JUDGE 16 VOTE FOR ONE</b>	<input type="radio"/> <b>DANIEL C. MORENO</b> Incumbent	<input type="radio"/> <b>LLOYD ZIMMERMAN</b> Incumbent
<input type="radio"/> <b>DAN GRIFFITH</b>	<input type="radio"/> write-in, if any	<input type="radio"/> write-in, if any
<input type="radio"/> <b>TERRI J. STONEBURNER</b> Incumbent	<b>JUDGE 25 VOTE FOR ONE</b>	<b>JUDGE 61 VOTE FOR ONE</b>
<input type="radio"/> write-in, if any	<input type="radio"/> <b>ROBERT A. BLAESER</b> Incumbent	<input type="radio"/> <b>ROBERT M. SMALL</b> Incumbent
<b>JUDGE 1 VOTE FOR ONE</b>	<input type="radio"/> write-in, if any	<input type="radio"/> write-in, if any
<input type="radio"/> <b>EDWARD TOUSSAINT, JR.</b> Incumbent	<b>JUDGE 27 VOTE FOR ONE</b>	<b>JUDGE 62 VOTE FOR ONE</b>
<input type="radio"/> write-in, if any	<input type="radio"/> <b>JAY M. QUAM</b> Incumbent	<input type="radio"/> <b>RONALD L. ABRAMS</b> Incumbent
<b>JUDGE 8 VOTE FOR ONE</b>	<input type="radio"/> write-in, if any	<input type="radio"/> write-in, if any
<input type="radio"/> <b>THOMAS J. KALITOWSKI</b> Incumbent	<b>JUDGE 28 VOTE FOR ONE</b>	
<input type="radio"/> write-in, if any	<input type="radio"/> <b>TODDRICK S. BARNETTE</b> Incumbent	
<b>JUDGE 9 VOTE FOR ONE</b>	<input type="radio"/> write-in, if any	
<input type="radio"/> <b>ROGER M. KLAPHAKE</b> Incumbent	<b>JUDGE 30 VOTE FOR ONE</b>	
<input type="radio"/> write-in, if any	<input type="radio"/> <b>SUSAN M. ROBINER</b> Incumbent	
<b>JUDGE 10 VOTE FOR ONE</b>	<input type="radio"/> write-in, if any	
<input type="radio"/> <b>HARRIET LANSING</b> Incumbent	<b>JUDGE 31 VOTE FOR ONE</b>	
<input type="radio"/> write-in, if any	<input type="radio"/> <b>MARGARET ANNE DALY</b> Incumbent	
<b>JUDGE 15 VOTE FOR ONE</b>	<input type="radio"/> write-in, if any	
<input type="radio"/> <b>KEVIN G. ROSS</b> Incumbent	<b>JUDGE 32 VOTE FOR ONE</b>	
<input type="radio"/> write-in, if any	<input type="radio"/> <b>PETER A. CAHILL</b> Incumbent	
<b>4TH DISTRICT COURT</b>	<input type="radio"/> write-in, if any	
<b>JUDGE 9 VOTE FOR ONE</b>	<b>JUDGE 33 VOTE FOR ONE</b>	
<input type="radio"/> <b>EUGENE LINK</b>	<input type="radio"/> <b>JACK NORDBY</b> Incumbent	
<input type="radio"/> <b>PHILIP D. BUSH</b> Incumbent	<input type="radio"/> write-in, if any	
<input type="radio"/> write-in, if any	<b>JUDGE 36 VOTE FOR ONE</b>	
<b>JUDGE 53 VOTE FOR ONE</b>	<input type="radio"/> <b>JOHN L. HOLAHAN</b> Incumbent	
<input type="radio"/> <b>DAVID L. PIPER</b>	<input type="radio"/> write-in, if any	
<input type="radio"/> <b>JANE RANUM</b>	<b>JUDGE 37 VOTE FOR ONE</b>	
<input type="radio"/> write-in, if any	<input type="radio"/> <b>RICHARD S. SCHERER</b> Incumbent	
<b>JUDGE 58 VOTE FOR ONE</b>	<input type="radio"/> write-in, if any	
<input type="radio"/> <b>THOMAS F. HAEG</b>	<b>JUDGE 38 VOTE FOR ONE</b>	
<input type="radio"/> <b>JAMES T. SWENSON</b> Incumbent	<input type="radio"/> <b>BERYL A. NORD</b> Incumbent	
<input type="radio"/> write-in, if any	<input type="radio"/> write-in, if any	
<b>JUDGE 1 VOTE FOR ONE</b>	<b>JUDGE 42 VOTE FOR ONE</b>	
<input type="radio"/> <b>BILL KOCH</b> Incumbent	<input type="radio"/> <b>CHARLES A. PORTER, JR.</b> Incumbent	
<input type="radio"/> write-in, if any	<input type="radio"/> write-in, if any	
<b>JUDGE 4 VOTE FOR ONE</b>	<b>JUDGE 43 VOTE FOR ONE</b>	
<input type="radio"/> <b>ANN LESLIE ALTON</b> Incumbent	<input type="radio"/> <b>JANET NORDELL POSTON</b> Incumbent	
<input type="radio"/> write-in, if any	<input type="radio"/> write-in, if any	
<b>JUDGE 5 VOTE FOR ONE</b>	<b>JUDGE 46 VOTE FOR ONE</b>	
<input type="radio"/> <b>KERRY MEYER</b> Incumbent	<input type="radio"/> <b>STEPHEN C. ALDRICH</b> Incumbent	
<input type="radio"/> write-in, if any	<input type="radio"/> write-in, if any	
<b>JUDGE 10 VOTE FOR ONE</b>	<b>JUDGE 47 VOTE FOR ONE</b>	
<input type="radio"/> <b>KATHRYN L. QUAINANCE</b> Incumbent	<input type="radio"/> <b>TANYA M. BRANSFORD</b> Incumbent	
<input type="radio"/> write-in, if any	<input type="radio"/> write-in, if any	
<b>JUDGE 11 VOTE FOR ONE</b>	<b>JUDGE 51 VOTE FOR ONE</b>	<input type="radio"/>
<input type="radio"/> <b>MARY STEENSON DUFRESNE</b> Incumbent	<input type="radio"/> <b>IVY S. BERNHARDSON</b> Incumbent	<input type="radio"/>
<input type="radio"/> write-in, if any	<input type="radio"/> write-in, if any	<input type="radio"/>

VOTE FRONT AND BACK OF BALLOT